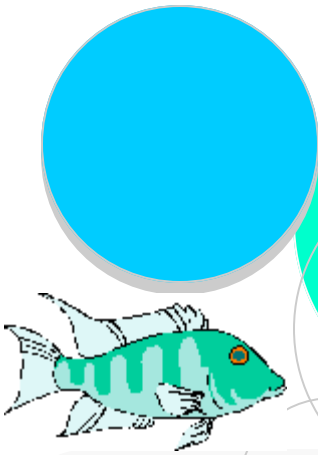


Car Wash



Did you know that car washing is environmentally damaging?



Why is Car Washing Damaging to the Environment?

- Pollutants in car wash water that is discharged to storm drains are not removed and end up in our lakes, rivers, creeks, streams, and other water ways.
- Wash water contains dirt, road grime, oil and grease, heavy metals, and soaps, which can destroy aquatic habitat and the quality of our water.

What Can You Do To Protect Our Water?

- If you are washing your car at home, wash it on a grassy or gravel area, where the wash water will soak into the soil and won't drain directly to a surface water or storm drain.
- Use a commercial car wash facility. All wash water is treated (through the sanitary sewer system) and most water is recycled.
- Use a flow control device on your hose, such as hand spray nozzle with an on and off trigger. Less wash water will need to be diverted to a sanitary sewer drain or grassy/gravelly area.

Charity Car Wash Information

If you are holding a charity car wash at a school, gas station, grocery store, church a restaurant parking lot, call Laura at City of Orting Public Works, (360) 893-2219, x139, to reserve a Car Wash Kit, free for your event!